

FastCAM[®] 3D Profiling

Weld Ready Parts
Direct from your Burning Machine

FastCAM® Bevel™

K, Y -Weld Ready Parts for Heavy Plate Forming



FastCAM® Bevel™



FastCAM® Bevel™

Incredibly complex welded construction all prepared directly on the machine!

- Makes easy work of nesting *complex* heavy plate beveling.
- Fully automatic path generation without programming
- Handles mixed 1,2,3-Pass Complex Beveling with ease.
- 'What You See Is What You Get' (WYSIWYG) style simplicity.
- Produces **realworld** precise engineered ready-to-weld parts.

We use the term 3-Pass or complex to distinguish it from perhaps thirty years of angle cutting, marketed by others as Bevel cutting when they are really 1-Pass chamfering systems.



Nested bevelled parts, accurate, clean, ready to weld.
Note long slot with opposite bevels and clean end. This
was done with single pass and complex torch rotation.



Bevelled items on bed and in construction. Full penetration with backing bar



Precise fit-up and test piece showing complex multi-pass bevel.



Structural beams in fabrication area. Note the clean work area not polluted by grinding



FastCAM® Bevel™

Bevel detail on profiled parts. Note closeness in nesting and low plate wastage



FastCAM® Bevel™

Detail on main support beams. All welds full penetration and all components direct from profiling machine





Fully welded structures ready to ship to site

Fully Automated Weld Ready Parts



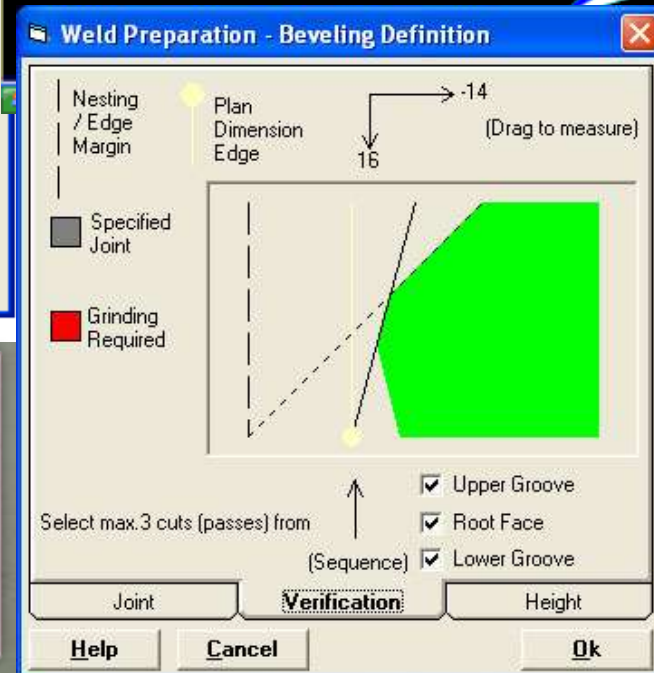
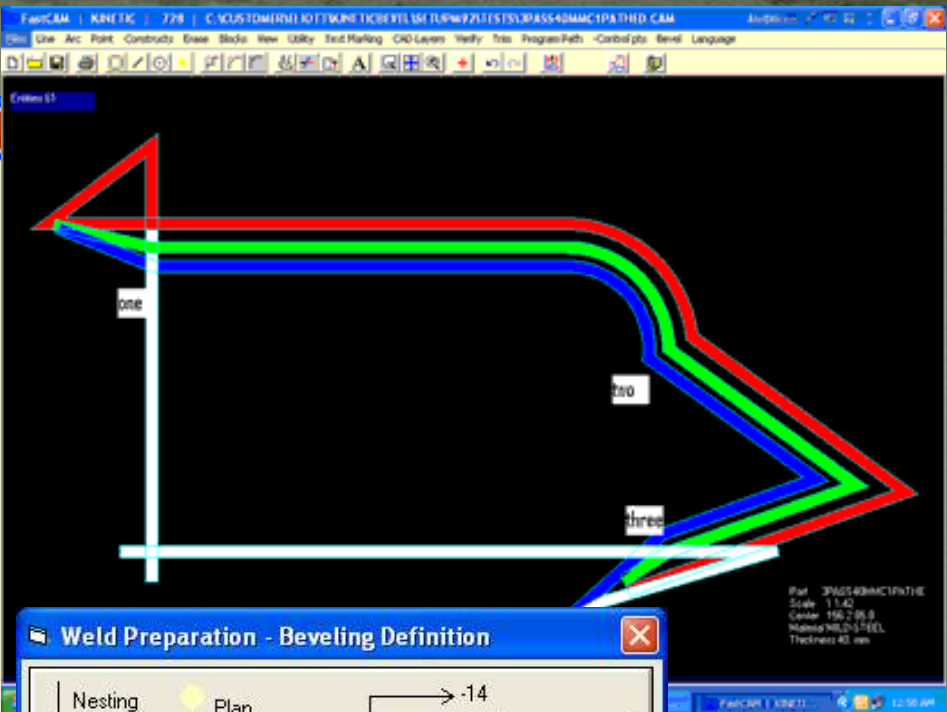
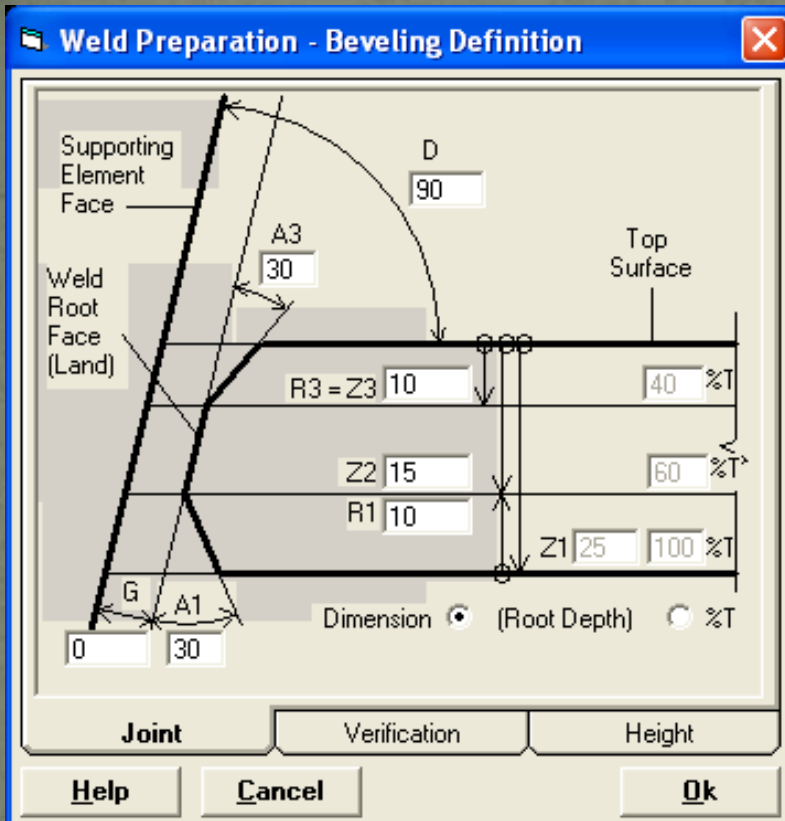
Dramatic New Benefits for Fabricators

We are removing an entire **PROCESS!**

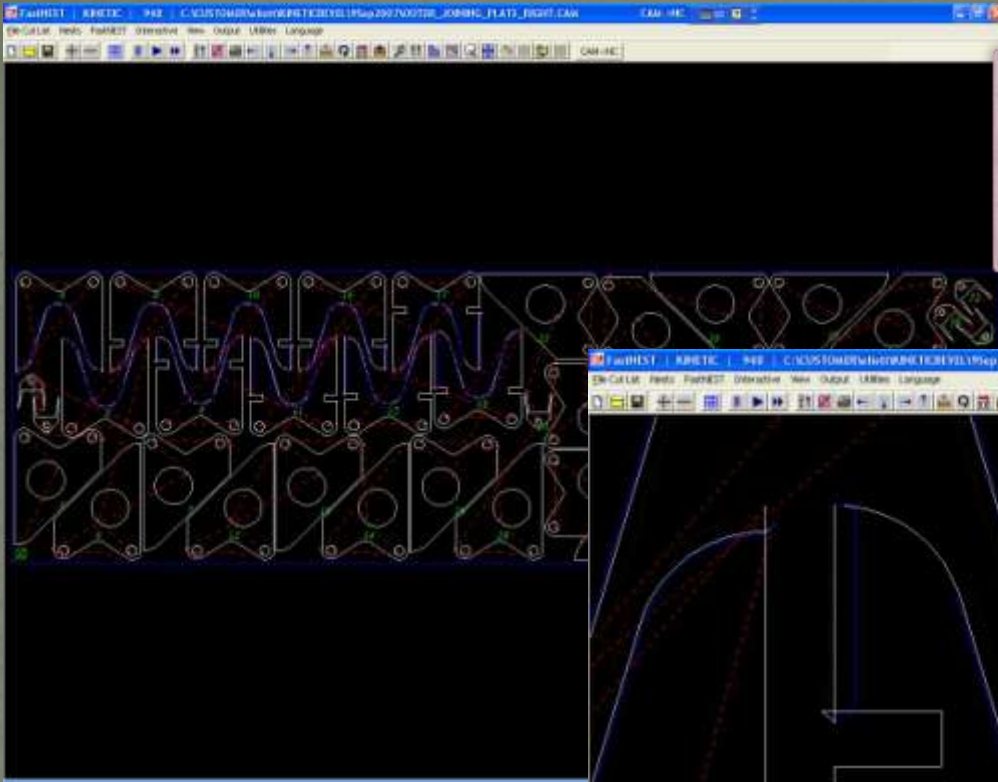
~~HAND CUTTING~~

~~HAND GRINDING~~

Plate Edge Preparation is very time consuming. To remove the entire process is a HUGE productivity gain. A machine cut edge will always be more consistent and accurate than a hand cut edge. The savings in material handling alone justify the cost of this technology.

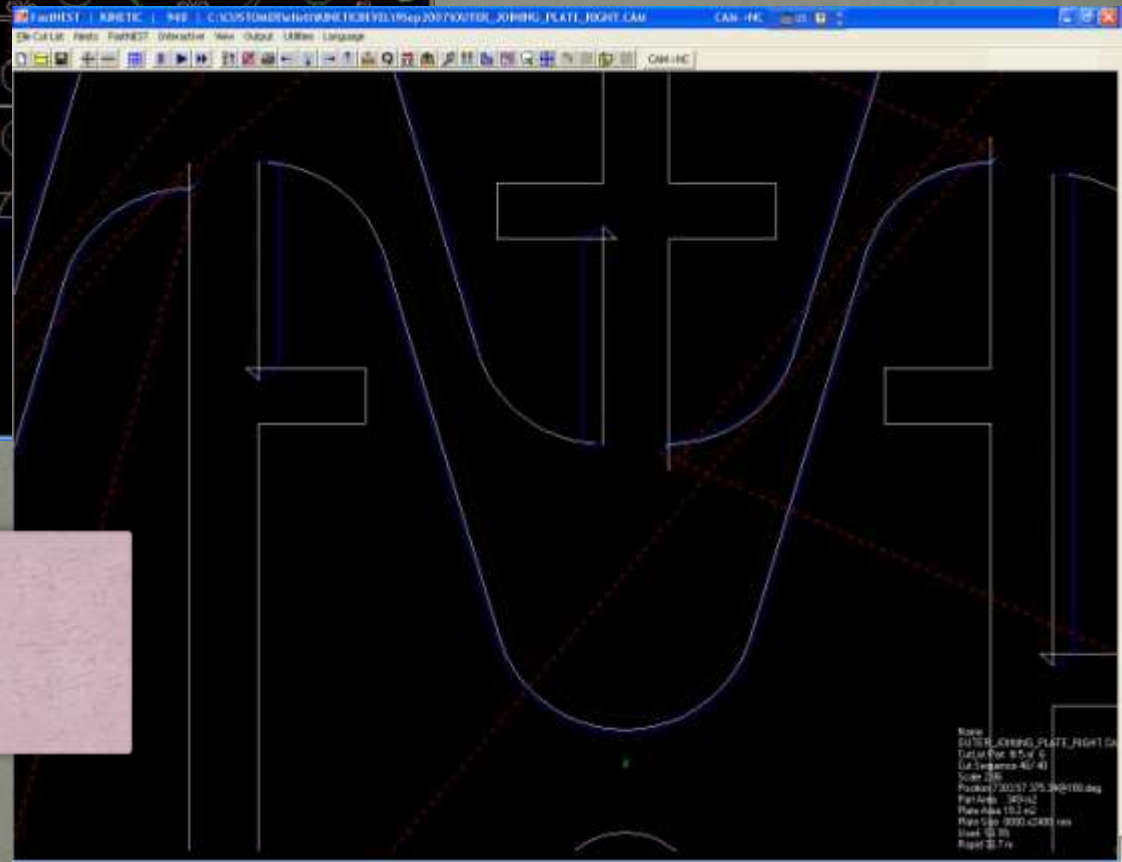


- All of the complexities of programming are hidden from the operator.



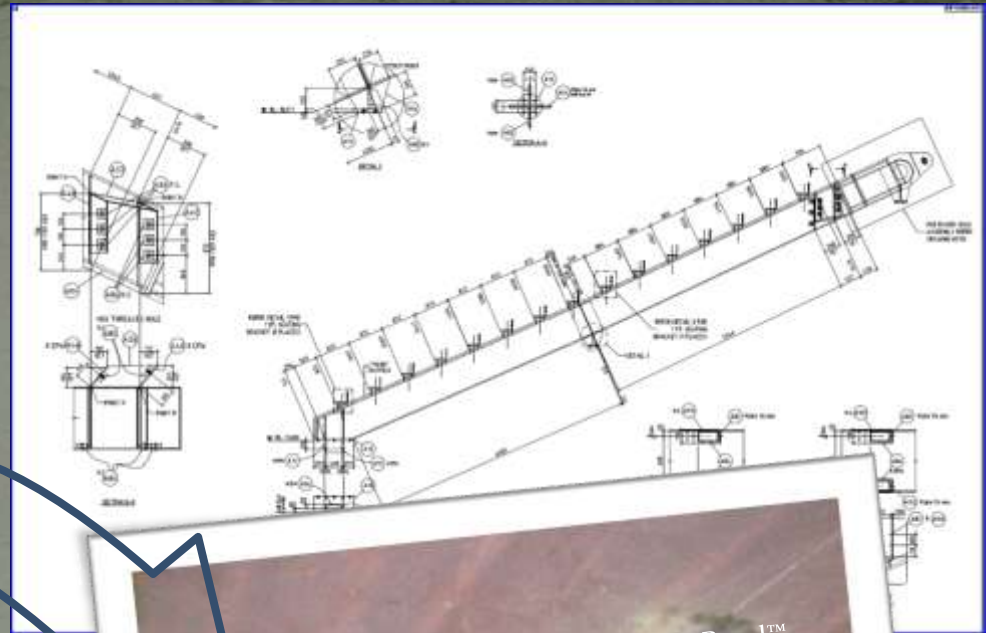
- The programmer nests the bevel CAM files

- Machine and process independent

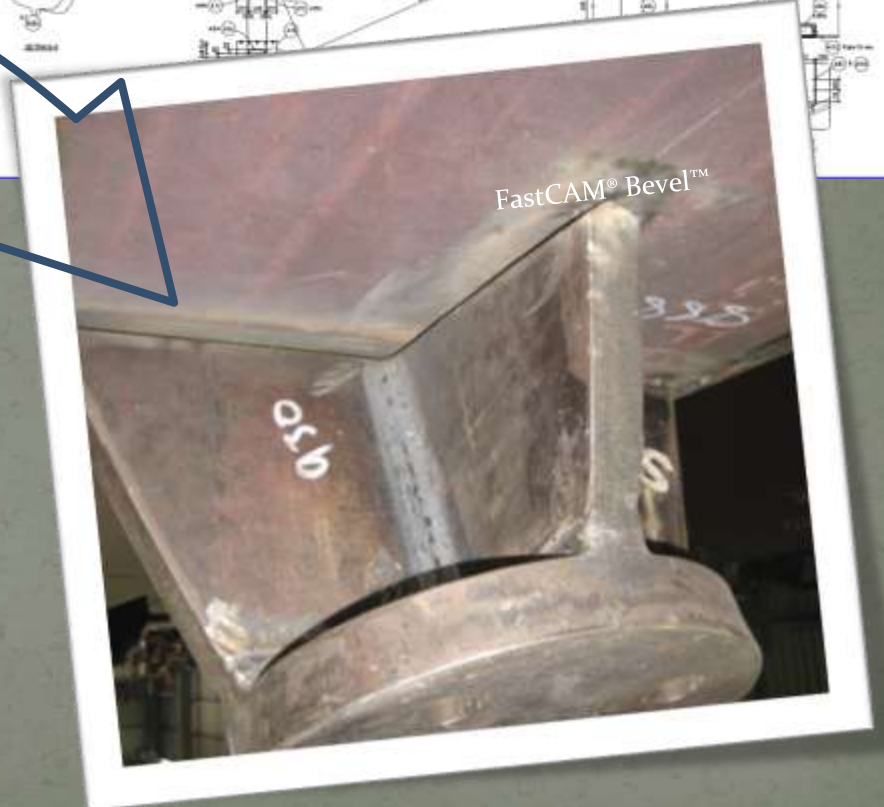
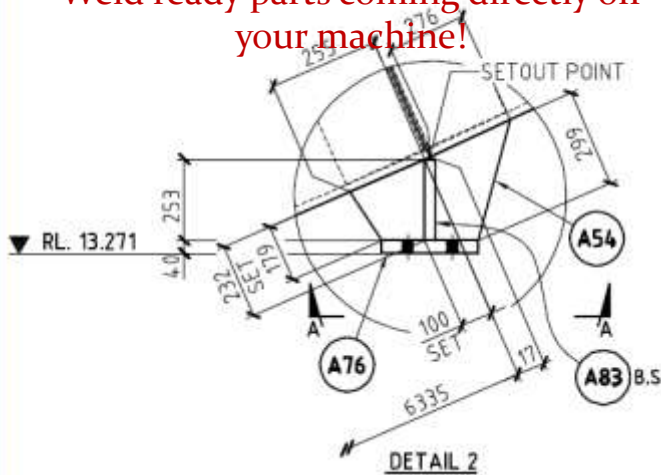


- *Precise parts come off the machine ready to be assembled.*

- The time saving to this fabricator on this job was approx. 40%.

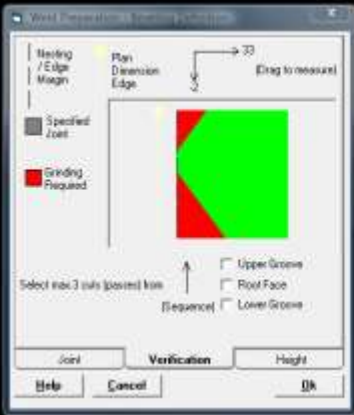


Weld ready parts coming directly off your machine!



FastCAM® Bevel™

FastCAM® Bevel™



File: EHDW0530
Scale: 1:1.5
Center: 9.73055
Material: MILD-STEEL
Thickness: 25 mm

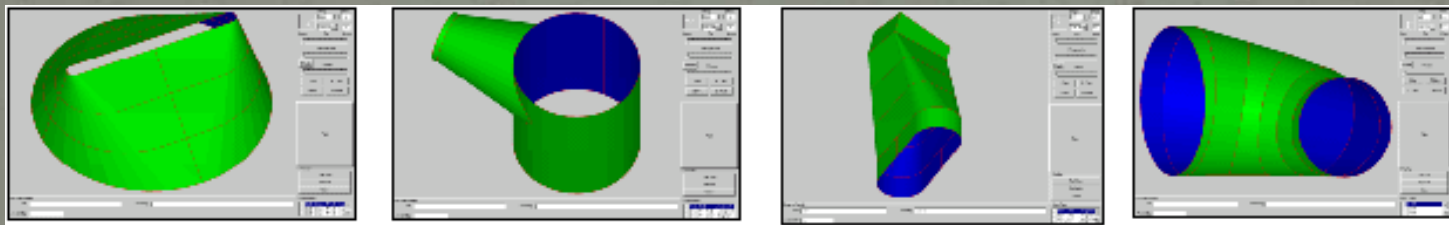


Technical Points of Difference

- Bumpers on parts to prevent collisions between bevels and obtain tight full shape nesting automatically
- Allowance for a varying dihedral, a non 90 degree weld face
- Bevels notches and holes
- Allows for a root gap, a critical feature if you want to get the size right
- Allows for multiple drawing plan standards so that you do not have to recalculate and redraw all the parts.
- Single Pass bevels can be mapped to DXF layers.

Technical Points of Difference

- Cuts precision corners using XYAC interpolation, if available
- Allows for up to 6 different types of standard incoming drawing views for 2D profiles.
- Matching heavy plate development system FastSHAPES[®] Bevel[™] for rolling bevels



We have also used our new 3-Pass Bevel Technology in our heavy plate development programs. While these were previously marked on the plate for semi manual edge preparation, we can now directly cut with a single oxy or plasma torch and even make three passes to get the grooves ready at the desired angles relative to the dihedral. Grooves are added in FastCAM.

Contact details

FastCAM® Bevel™, also known as FastCAM® 3D 'Double Vee', forms part of a 3mPlasma machine upgrade available through Linatrol.

For more information contact

fastcam@fastcam.com OR

Kal Shergill, kal@linatrol.com Phone: +905 664-0363

Torch enquiries to: oemplasma@esab.com or Phone:+1843 664 5550.

www.fastcam.com

© 2010. FastCAM Pty. Ltd.