

## FastCUT® CTL (Cut To Length) Nesting & Costing Software



### **FastCAM Inc.**

8700 West Bryn Mawr  
Suite 800 South  
Chicago IL 60631-3507  
Tel: (312) 715 1535  
Fax: (312) 715 1536  
[Email:fastcam@fastcamusa.com](mailto:fastcam@fastcamusa.com)  
[Http://www.fastcamusa.com](http://www.fastcamusa.com)

### **FastCAM Pty Ltd.**

96 Canterbury Road,  
Middle Park  
Victoria 3206, Australia  
P.O.Box258, Albert Park3206  
Tel: (613) 9699 9899  
Fax: (613) 9699 7501  
[Email:fastcam@fastcam.com.au](mailto:fastcam@fastcam.com.au)  
[Http://www.fastcam.com.au](http://www.fastcam.com.au)

### **FastCAM China**

Level 21, Senmao Bldg.  
101 Yincheng East Road  
Pudong Shanghai 200120  
Tel: (86 21) 2890 3127  
Fax: (86 21) 2890 3131  
[Email: fastcam@fastcam.com.cn](mailto:fastcam@fastcam.com.cn)  
[Http://www.fastcam.com.cn](http://www.fastcam.com.cn)



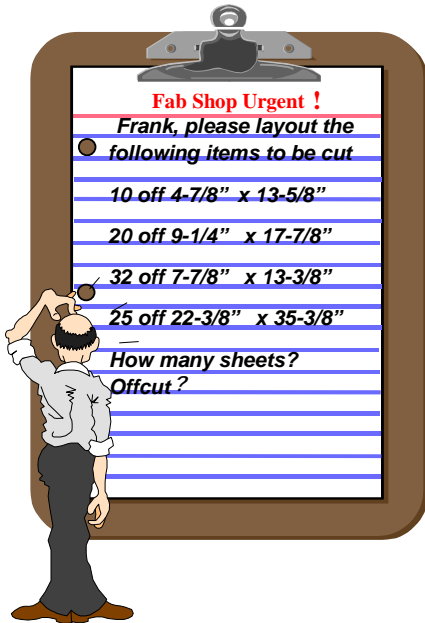
- **Works with Coil as well as Sheet and Bar!**  
FastCUT® CTL provides a means of nesting a set of rectangular shaped parts or bars into a set of coils, rectangular shaped sheets or bars of stock material.
- **Simple to Learn and Operate!**
  1. List the Stock,
  2. List the parts,
  3. Click nest,
  4. Print out the nesting patterns and costing report - done!
- **Three-way Choice for Stockfeed**
  1. Lengths as given,
  2. Coil cut to mixed lengths,
  3. Coil cut to same lengths.
- **Multilingual Language Independent!**  
Supports all languages under Windows 95/98, NT, 2000.
  1. Chinese,
  2. Japanese,
  3. German,
  4. Spanish, etc.
- **Works in Inch & Metric.**

**Price: FastCUT CTL (aka FastCUT Coils) can be purchased as an add-on to FastCUT for \$495.00 or as a complete package for \$995.00**

# FastCUT® CTL (Cut To Length) Nesting & Costing Software

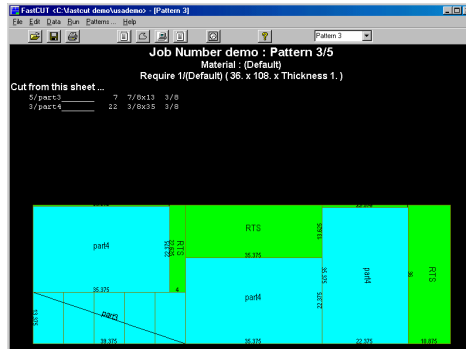
FastCUT® CTL turns a problem into a solution in seconds!

## Nesting & Costing Instantly!



It's so simple!

1. List the stock,
2. List the parts,
3. Click nest,
4. Print out the nesting patterns and costing report --- done!.



Report contains all data for production.

- ✓ Total sheets required.
- ✓ Item and Sheet Sizes.
- ✓ Return to Stock
- ✓ Nesting efficiency
- ✓ Mass of components
- ✓ Cutting list for shop
- ✓ Graphic nest layout
- ✓ Estimators Dream
- ✓ Also estimates linear products such as bar and rod

FastCUT® CTL is ideal for bar, rod, plate as well as coil. Estimate all sorts of coil, sheet and linear products.

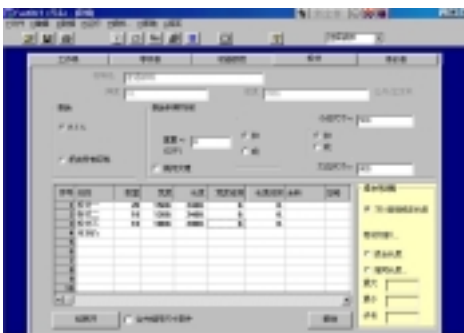
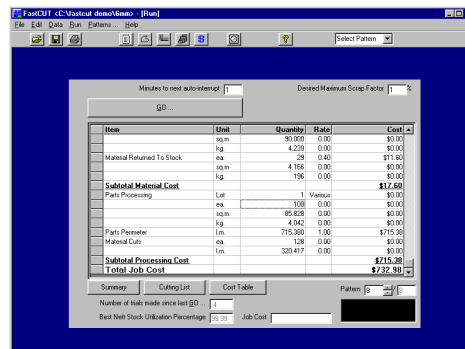
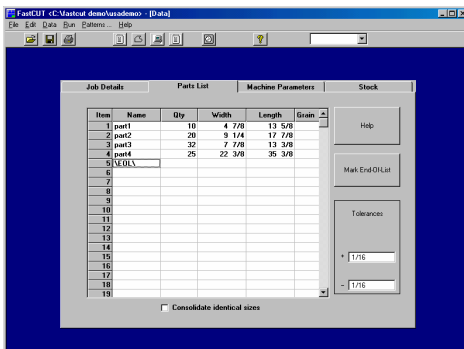
Used around the world by *Shopfitters, Cabinetmakers, Plumbers, Boiler Shops, Sheetmetal & HVAC, Steel Fabricators.*

Anywhere material is processed for manufacturing. From glass, timber and aluminium-alloy in a building to maximum yield from a coil of steel

Save thousands in material alone!!  
 Pays for itself in days!!

Other FastCAM Products Include:

- ◆ FastCUT® for Shear & Saw Nesting & Estimation.
- ◆ FastTRACK® Remnant graphic database.
- ◆ FastCAM® Professional Full shape automatic nesting. Multi plate, multiinput, multi output for NC cutting machine of Oxy, Plasma, Waterjet and Laser.
- ◆ FastSHAPES® to develop the most complex shapes in minutes and produce a variety of outputs like CAM, DXF, NC & printed tabulation for manual or machine cut patterns.
- ◆ FastFRAME® Pipe profiling templates & NC cutting for pipe space frame.
- ◆ FastBEAM® Custom built CAD interfaces. output NC for beam line drills.



FastCUT® Optimization:

Two choices are available for optimization, either minimize scrap, or minimize sheet consumption. To minimize scrap, the defined remnant will be returned to stock.

FastCUT® Calculates mass and perimeter of parts. You can even specify saw width for materials such as timber.

\* \* \* \* \*

FastCAM, FastCUT, FastNEST, FastFRAME, FastSHAPES, FastCOPY, FastTRACK are all registered trademarks of Fagan Microprocessor Systems Pty Ltd.

