

FastCAM® Bevel™

WELD PROCESSING MADE EASY

FastCAM® *Ideal for Metal Service Centers & Fabricators*



■■■■ **PRODUCE TRUE K,Y, ENGINEERED PARTS FOR HEAVY PLATE FORMING!**

HIGHLIGHTS:

- 3D METAL PROFILING
- 3-PASS SINGLE OXY/ PLASMA BEVELING
- SINGLE TORCH
- INCLUDES FASTCAM® PROFESSIONAL SYSTEM
- MICROSOFT WINDOWS

UNIVERSAL SYSTEM WITH CONTROLLER SUPPORT FOR: VOYAGER III, ESAB, MESSER GREISHAM, KINETICS, FARLEY (ORTHOGONAL FOLLOWING NC CONTROL NOT NECESSARY)

Nuts and Bolts:

Complete Automatic System:
Nest->Tool Path->Cut->Bevel

Edit direct onto your imported CAD files

Land & Root Gap
Specify by % IE 70/30

Simple or complex weld prep with top or bottom cuts

Transformations for most popular drawing standards

3D Shape Development Software available separately

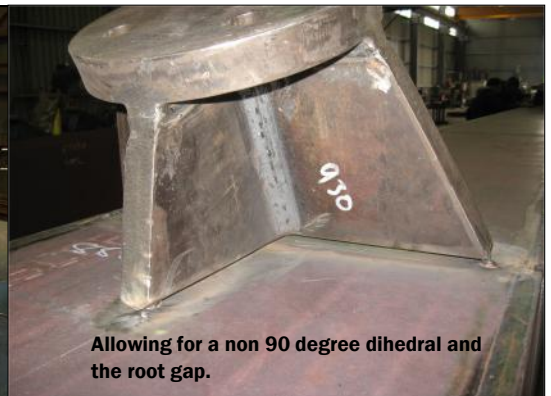
Bevel Editor available as a separate product

Plate Edge preparation can now be done simply and easily off-line. Components can be quickly created with all weld detail in place. The integrated FastNEST® system preserves this detail no matter how the part is moved on the plate.

It's so simple; select the part and add the required weld detail so any section. Program a single edge or a complete contour. Top, Bottom, angle, land, root gap, all can be defined simply and quickly, once nested processing is completely automatic. FastCAM® Bevel™ is built on the FastCAM® Professional System (see separate brochure), sold worldwide for over 25+ years. If you already have FastCAM®, you can upgrade. No additional training or expertise is needed. The simplicity of nesting & programming are unchanged. Finally, an easy-to-use NC system for 2D metal profile cutting that includes automated weld preparation!



Nest and cut these massive sections ready to weld with ease. See over for more information.

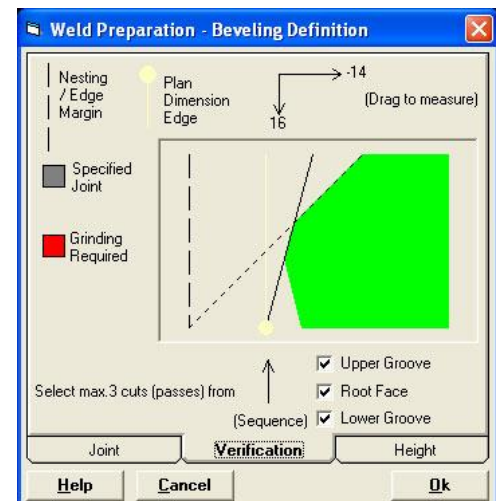


Allowing for a non 90 degree dihedral and the root gap.

■■■■ 'WYSIWYG' STYLE SIMPLICITY

All of the complexities are hidden from the operator. To add a bevel of 1, 2, or 3 passes, there is only the need to fill out the bevel form. The programmer nests the CAM files, which look identical to the DXF but contain the additional bevel information. Additional problems like colliding bevels are fully accommodated with true shape nesting functions.

The technology is totally NC independent which means that engineers can be offered the ability to apply the weld prep to their DXF parts prior to production (using a FastCAM® Bevel™ Editor, sold separately).



Specify the most complex weld preparation and apply it to your part with a simple click.

FastCAM has been supplying PC-based software for Burning, Shearing and Sawing/Drilling machines for over 25 years. The flagship product FastCAM® offers unique integrated postprocessors, NC verification and NC code nesting that still sets it apart from other CAM and CAD/CAM systems. The new generation of FastCAM® software is used in many countries, in many languages and in many different environments.

Today the product line has been expanded to include dozens of trademarked products offering a wide range of solutions for metal fabrication and Service Center operation. FastCAM has OEM and Business Partners in North America, South America, China, Australia, New Zealand and Europe (Poland, UK, Czech, Hungary). We welcome all enquiries.

FASTCAM WORLDWIDE OFFICES

FastCAM Inc.—USA
8700 West Bryn Mawr,
Suite 800 South,
Chicago, 60631 3507
Phone: 312 715 1535
Fax: 312 715 1536
Email: fastcam@fastcamusa.com

FastCAM Pty. Ltd.—Asia Pacific
96 Canterbury Road,
Middle Park, Victoria, 3206,
Australia
Phone: 61 3 9699 9899
Fax: 61 3 9699 7501
Email: fastcam@fastcam.com.au

FastCAM China
No.34, 377 Chenhui Road,
Zhangguang Tomson Garden,
Zhangguang High Tech,
Pudong, Shanghai, 201203
Phone: 8621 5080 3069
Fax: 8621 5080 3071
Email: fastcam@fastcam.cn
Web: www.fastcam.cn

www.fastcam.com

FASTCAM SUPPORTS: BURNY, LYNX, WESTINGHOUSE, ESAB, PICOPATH, CREONICS, HANCOCK, FANUC, C & G, PCS, KOIKE SANOS, TANAKA, MESSER, FAGOR, FARLEY, ANCA, SIEMENS, JHE, HYBRID, MYNUC, ANCA, PDF32 AND MANY OTHERS. THIS IS NOT A COMPLETE LISTING — CONTACT YOUR RESELLER OR FASTCAM DIRECTLY FOR MORE.

FastCAM® will operate on most Pentium based PC's with Microsoft Windows 98/ME/XP or NT4/2000 however the recommended system, particularly for nesting, is a Pentium IV 256/512Mb RAM 80Gb HDD 17" Monitor & Windows XP.

OTHER POPULAR PRODUCTS IN THE FASTCAM® PRODUCT SERIES:

FastCAM® System—Integrated Drawing, Nesting and Post Processor with 'One Click' CAD import.

FastNEST® - Semi-manual / automatic full shape nesting.

FastSHAPES® - Unfolding/Forming Development set for Thick Plate.

FastCUT® -Rectangular & Linear Optimizer with Cutting List.

FastCOPY® - Offline NC Digitization System for parts & drawings.

FastCAM® QE™ —Comprehensive multi-user Quotation System with inbuilt Nesting Engine.

FastCAM® MTO—Fast, automatic material take-off for structural.

FontGEN—Fonts into DXF.

FastFRAME® and FastPIPE™ — Tubular and Pipe Development Programs.

FastBEAM®—Universal Graphic Beamline programming system.

FastTRACK®—Audit and Track Plate and Remnant Plate.

FastLINK™—Fast DNC download from PC to cutting machine.

Simple 'Extras' that can be incorporated into the FastCAM® System include:

Textmarker—for marking/identification of processed parts.

Common Cutting or Bridging—Cut parts with a common edge.

AutoCAD DWG Import—>FastCAM.

FASTCAM® BEVEL™ IDEAL FOR WINDTOWERS



Wind-tower production is booming. Structures are often over 300ft high (90M) to get into the ideal wind zone. The welding is critical if they are to perform safely and maintenance free over their lifespan. These masts are far from simple; varying plate thicknesses, complex weld intersections and the accurate fit-up required means the preparation is crucial. FastCAM Bevel allows you to prepare, nest and cut these massive sections ready to weld with ease.